

GRANNY SQUARE MONTH

knit  craft
by hobbycraft



Day 21

Instagram [@hooded_stitched_and_glued](https://www.instagram.com/hooded_stitched_and_glued)

Abbreviations (UK terms)

ch – chain
dc – double crochet
sl st – slip stitch
rep – repeat
st(s) – stitch(es)
yo – yarn over

What you will need:

- Knitcraft Cotton Blend in Hot Pink (Yarn A), Lilac (Yarn B), Purple (Yarn C), and Teal (Yarn D)
- 5mm crochet hook
- Tapestry needle
- Scissors

Pattern notes

Ch1 at the start of rows does not count as a st.

This square is worked in the tapestry style, working over the strands of any other unused colour in that row. To change colour, if you are working with A, make the final yo of your last st before the change with B. Continue with B as directed in the pattern and chart, carrying the strand of A by working over it, holding it on the wrong side of the work. When it's time to change again, complete the final yo of the last st with A, then repeat the process. This is the same for all colour changes, with the exception of Yarn D, where both A and B need to be carried for the whole row in order to be in the right position for the next row. When carrying yarn, give it a gentle tug before changing colour to ensure there are no loose loops of yarn, but be careful not to pull it too tight or your work will pucker up.



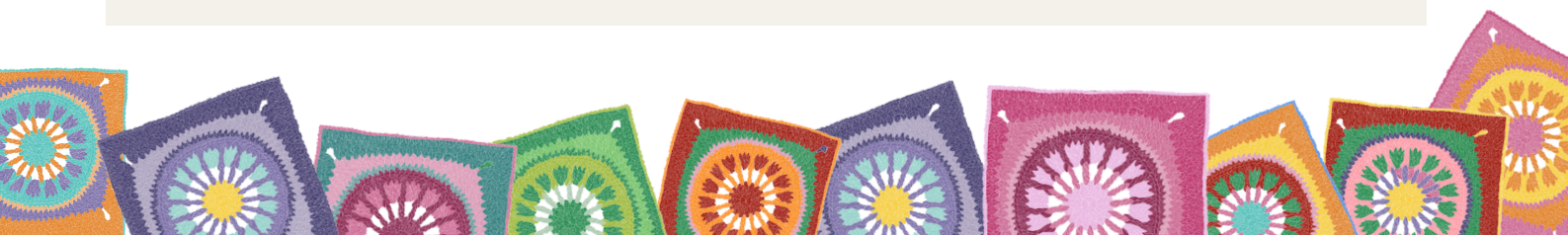
When working row 3 carry the other 2 colours ready for next row.

Not all colours are needed for all rows, where a colour is not needed for a few rows I have indicated to fasten it off.



Surface slip stitch (for the vertical stripes)

Make a slip knot on your hook, then remove the loop and place the working yarn behind your work, with the right side facing. Insert your hook through your work where you want to begin your stripe and place the loop back on the hook. Pull the loop through to the RS, then *insert your hook into the work in the gap between stitches in the row directly above, yo, pull the loop through. * Repeat from * to * until you reach the top of the square. Fasten off by cutting the yarn, yo and pull through to make a knot.





With A, ch34.

Row 1: Working into 2nd ch from hook, with A 7 dc, with B 5 dc, A 9 dc, B 5dc, A 7dc. Turn. 33 sts.



Row 2: With A, 1 ch, 7 dc, with B 5 dc, A 9 dc, B 5dc, A 7dc. Turn.

Row 3: With D, 1 ch, 33 dc. Fasten off D

Rows 4-7: Rep Row 2. Fasten off A

Row 8: With B, 1 ch, 7 dc, with C 5 dc, B 9 dc, C 5dc, B 7dc. Turn.

Rows 9-12: Rep Row 8. Fasten off C

Rows 13-16: Rep Row 2.

Rows 17-30: Rep Rows 3-16

Row 31: Rep Row 3

Rows 32-33: Rep Row 2.

Fasten off and weave in ends.

Using D, work surface sl st vertically up the square, beginning in stitch numbers 3, 17 and 31 of the starting chain and ending at the top of the square.

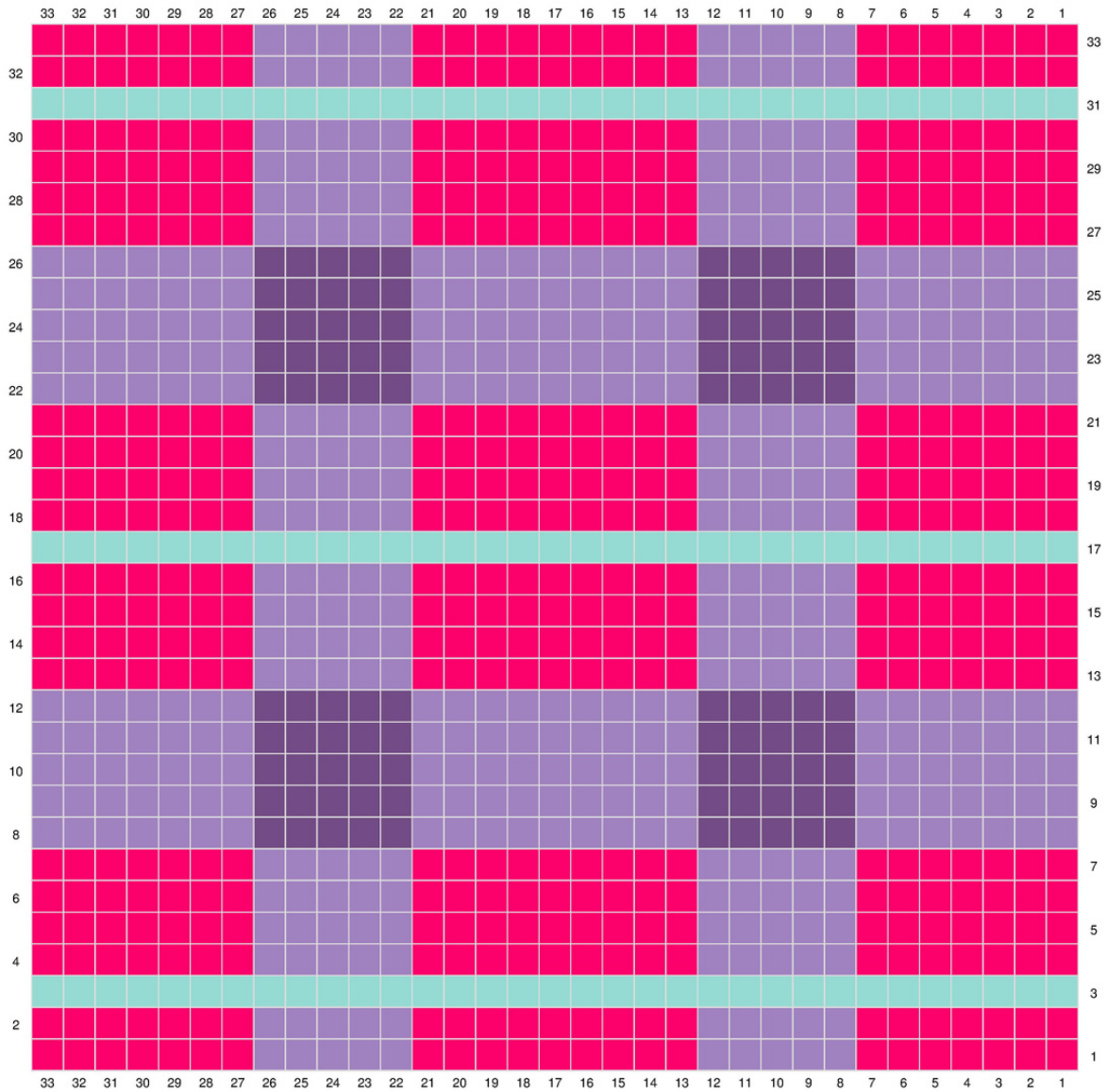
Weave in the ends from the surface sl st.

Border

Join D in top right corner, ch 1, 33 dc (the st at the top of the surface sl st rows will be hidden, just push the surface sl st to the side and you will see the st you need to work into), ch 1 at the corner, 33 dc evenly down the side, ch 1 at the corner, 33 dc across the bottom (working into the foundation chain), ch 1, 33 dc evenly up the side, sl st into first dc, fasten off.

Weave in any ends.





- Teal (D)
- Hot Pink (A)
- Lilac (B)
- Purple (C)

